

Newsletter 9: 16 June 2016



From The Deputy Principals

Kia ora koutou

Staffing Update:

The twins have arrived! Nicole J and her partner Sam welcomed Hunter and Max on Thursday 9th June. Mum and babies doing well.

Rosalie Sprosen has resigned from her teaching position, and the appointments process for a replacement teacher is underway. Rosalie has a long history with Central New Brighton School and many of our current Rāwhiti students will have benefited from her teaching experience over the years. We wish her well at Linwood North School.

Eastside Rocks:

Last Thursday and Friday nights a group of Year 5-8 students represented Rāwhiti School at the Eastside Rocks concert. They joined with students from Avondale, Wainoni, Queenspark, St James, Aranui and Aranui High to put on a fabulous show. Many thanks to Tuahine Amanda, who worked with these talented students learning and practicing their songs, and attending rehearsals.



Bag Storage & Library Shelving:

The units have arrived and installation has begun this week. Thank you for your patience as we found a solution and we know you will be as relieved as we are to finally get the bags out of the classroom spaces and into their purpose built units. Also have you seen our new Library shelving – it looks great!

Avon-Ōtākaro Network (AVoN) Matariki in the Zone Art Competition:

Congratulations to our students who were place getters in the 'Matariki in the Zone' Art Competition. Students were asked to create artworks to share what they would like to see in the red zone in 10-15 years' time. The artworks will be on display as part of the Matariki in the Zone event this Sunday 19th June 10am-2pm at ANZAC Drive Reserve, Chimera Crescent, Burwood. Well done to the other students in Papatūānuku who also submitted entries.

Junior Section – Mason, Cole, Petra, Lexie and Elliot (all New Entants/Papatūānuku)

Senior Section – Dre, Ty, Aka and Xavier (all Ata Hapara/Papatūānuku)

Ngā mihi nui ki a koutou katoa

Helen Parata & Paul Wilkinson



Principal Awards

Rongo-mā-tāne – Charli, Toby R-F, Tyson, Willow, James, L.J
Haumia-tiketike – Nikita
Papatūānuku - Tutereinga, Louis, Jacqueline-Lee, Kenadie, Jaz
Tawhirimatea - Lachlan



Calendar of Events

June

22 Court Theatre Matariki Performance 2pm
Canterbury Cross Country
24 School Assembly 9.15am
29 PTA Coffee Morning
30 BoT Meeting 6.30pm

July

4-8 Māori Language Week
7 PTA Meeting 7.30pm
8 School Assembly 9.15am
25 NBCCC Nathan Wallis presentation 7-9pm

School Notices

School Accounts:

You will have received your child's current school account. Funds from School donations are an important part of the school budget and allow us to provide superior resources for our students. Payment of the donation is voluntary. Activity donations go towards the costs of equipment, experiences, and services which are extra to the school's curriculum obligations. They also go towards curriculum based activities which involve a 'take home' component for the student to keep. Rāwhiti School's activity donation is paid per activity. Parents are invoiced for costs relating to sport and class activities, cultural performances, and Technicraft fees for years 7 and 8. The cost of transport to Phillipstown for Technicraft is funded by the Ministry of Education.

We encourage you to make regular weekly payments to help with budgeting school expenses. Our bank account number is: 03 0814 0000333 25. Please put your child's name as a reference. Eft-pos is available in the school office and if cash is been sent to school, please put in a sealed envelope with your child's name, room number and reason for payment . In all instances if payment for an event/trip is going to be difficult for you we encourage you to contact the school office as soon as possible to discuss options.

New Entrant Enrolments:

Do you have a child turning 5? Do you know of any children who are turning 5 and intending to come to Rāwhiti School? Do they have an enrolment pack? It is really helpful for us to know who is intending to come so we can plan for classes, school visits and staffing. Enrolments forms are available on our school website or from the office.

<http://www.rawhiti.school.nz/general-information/enrolment-information>

Court Theatre: Matariki Performance:

Many thanks to the families who have already paid for the performance. The cost for the show is \$2.50 per student with the school contributing the balance. The show is at 2pm on Wednesday June 22nd.

Rāwhiti Band Lunchtime Concert:

Amplify School of Music would like to invite you to come and watch the first EVER performance from the Rāwhiti School Band, which will be followed up by a special performance from your very own music tutors! So come have some fun, support the team, and be entertained!

WHEN? Friday the 24th of June. WHAT TIME? Lunchtime!! 12:10pm till 12:30pm

Kindling for Sale – Joint PTA and Year 7/8 fundraiser:

Winter is well and truly here. Do you need some kindling? The PTA and senior Year 7/8 students are fundraising by selling bags of quality dry kindling, approx. 50 pieces per bag, perhaps more. Each bag also comes with a flyer giving burning instructions which describe a six step process for making a fire that burns more efficiently and costs less to run.

Bags are \$6.50 each. Contact the PTA if you would like to order some kindling pta@rawhiti.school.nz

Scooters & Skateboards:

We have been working through a number of issues relating to children bringing their scooters and skateboards to school. We are trying to problem solve each issue as it arises, as we would hate to have to ban the use of scooters at school – they are such a great way for our children to burn off energy during the breaks.

Does your child have a lock for their scooter/bike? We have had a number of scooters either going missing, left outside overnight or the weekend, or children going home with the wrong scooter by mistake. Missing or mistaken scooters and skateboards usually show up and can be returned if they are named. Please check that your child has the right scooter! We strongly recommend that bikes and scooters are locked when brought to school using a cycle lock with a combination (rather than a key which can also get lost). This helps to keep these high cost items secure and will prevent them from going missing.

Science Home Learning Challenges:

As part of our Term 2 Science learning around the concept of 'Power', we are planning a Science Learning Celebration for Thursday 30 June, (time to be confirmed), where the children will be sharing their learning from class. We thought it would also provide an opportunity to showcase all the learning that can happen at home too. We have put together some Science-Power Challenges that children and families might like to try at home. These are some suggestions but you are most welcome to find your own Science learning challenge to try if these ideas don't appeal.

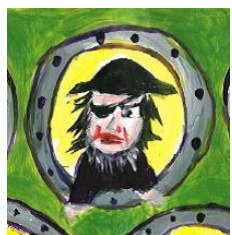
<https://docs.google.com/a/rawhiti.school.nz/document/d/1NptOms4BOWnmyHm1DDEhvVeWP8yds0NDQsZ1cWmFmdU/edit?usp=sharing>

Dental Therapists:

The Dental Van has arrived at school. They will be on site until the end of the term, working their way through the classes.

Community Notices

Puppets at the Port:



A day of five fabulous puppet shows for all the family – in association with the Lyttelton Festival of Lights. Saturday June 18th. Shows at 10am, 11am, 12pm, 1pm and 2pm. St Saviours Holy Trinity Church, Winchester Street, Lyttelton. Cost \$5 per person or \$20 for family of 5. Bookings: Phone 021 0327014 or email neillj@snap.net.nz

Netball ANZ Future Ferns & Nettabury

Start your netball at the Christchurch Netball Centre! Sessions 10-11am at Hagley Park.

- ANZ FutureFERNs for Years 1&2 (\$40 for 9 weeks)
- Nettabury for under 5s (\$2 per player per week)

Contact Sara 3794486 or gamedevchch@xtra.co.nz

More information can be found at www.netballchristchurch.org.nz

Whaka Inaka Project – Volunteers needed:

Our inaka/whitebait spawning habitat project has been a success thanks to all our supporters and volunteer helpers! With just one phase to go we need fit & healthy volunteers to help remove straw bales from the river bank. If you can help please register your interest by emailing dsharp@conservationvolunteers.co.nz. Volunteers will be rewarded by food and drink by Cassels and Sons at Blue Smoke (next to the Brewery).

DATE: Sat. 25 Jun 2016 (Weather dependent, backup dates to be notified)

TIME: 9am–2pm

PLACE: 30 Barton St (GELITA entrance)

WEAR: waterproof boots/shoes/gloves & gear that can get dirty

North Beach Community Childcare Centre Fundraiser – Nathan Wallis presentation 3- 7 year olds

Nathan is a well-known and respected speaker in relation to child development and brain science. He will share research around this age group and their needs. Tickets are \$15 each, available from North Beach Childcare Centre or Rāwhiti School office.

Toy & Clothing Swap

Saturday 18th June, 10am - 12noon
@ 180 Queenspark Drive
Parklands Baptist Community
Church

Toys and clothing available to swap or choose to take away.

Bring a gold coin and good quality clothing or toys that you wish to swap.

For more information phone Anita on 383893

How do 3-7 year olds learn? A presentation by Nathan Wallis



For the 3-7 year old age group many people assume that this age is basically a little 7 year old, and a watered down more basic version of the 7 year old curriculum is appropriate. **It's not!** This is a unique stage of development in which the child has needs specific to this age group.

Nathan will explore the research field that relates to this development and how this impacts on our practice and relationships with young children. Nathans presentations are fun, interesting and easily relatable to everyday life.

Monday 25th July 2016
7-9pm Rawhiti School Hall
150 Leaver Terrace
\$15 per person

**NORTH
BEACH**
Community Childcare Centre

Limited spaces available. Tickets available at North Beach Community Childcare Centre or Rawhiti School Office - cash only.