



Newsletter #15 - Te Pānui o te kura o Rāwhiti: 18 October 2018

E ara ake ana i te ūruhi
Rising Above The Ordinary

From The Principal - Te Pū kāea a te Tumuaki

Welcome back to what is usually the busiest term of the school year. Our calendar is already starting to fill up, and we have set the dates for key end of year activities. You can check these out on the school calendar found on our website, or on your mobile device using our school App (read on for details). Our newsletter now has a "Mark Your Calendar" section on the front page that will also alert you to what is happening and when.

During the second week of the school holidays 25 of our teaching staff attended the annual Ulearn Conference in Auckland. We considered ourselves privileged to be able to join 1500+ like-minded educators for three days of continual PLD, delivered via keynote speakers, spotlight sessions and 250+ breakouts, and offer our sincere thanks to our Board of Trustees for allowing us this opportunity to connect, collaborate, and innovate.



continued on next page ...



Mark Your Calendar

OCTOBER

- 19th Out of Zone applicants advised
- 22nd School closed—Labour Day
- 24th Y8 HPV vaccine, 2nd dose
- 25th PTA meeting

NOVEMBER

- 2nd 2019 class placement info due
Y1-3 assembly
- 5th Golf in schools
- 6th Y4-8 Athletics
Rotary Award dinner
- 7th Rongo Ma Tane visit Haeata
Board of Trustees meeting
- 9th Whole school assembly
Last day to order school photos
- 14th Y7/8 camp fees due
East Zone athletics
PTA meeting
- 15th Mufti day for PTA Xmas raffle
- 16th School closed—Show Day
- 21-23 Y7/8 camp Spencer Park
- 27th Cluster kapahaka showcase
- 28th Y7/8 Top Team
Getting ready for Rāwhiti party
- 30th PTA Twilight Fair, 4pm-8pm



From The Principal continued ...

While we were away, the team from City Care were back at school working on replacing the concrete, fixing sections of our roof, and remediating a number of niggling issues in each of the learning studios. We are ever hopeful that the end of this year we will see the completion of the defects programme.

The next stage of our own landscaping plan is going out to tender and we have also paid the deposit for the amazing climbing frame, which will be installed over the Christmas Holidays and ready for use at the beginning of Term 1, 2019. This is being jointly funded by the BOT and the PTA – so please continue to support PTA fundraising efforts, especially the upcoming Twilight Fair on November 30th. All of our children will be involved in making things for selling at the fair – so you better start saving your pocket money. And, keep an eye on the newsletter for information on what will be available for purchase on the night. We promise amazing food and prizes. Diary the date now.

Final Assembly Tuesday 11th December, 6.30pm

While you are noting dates in your diary, please also set aside the evening of Tuesday 11th December. This special assembly is a whole school event at which we recognise a range of achievements, celebrate our year, and farewell our Year 8 students. It's a chance for us all to acknowledge our senior students and wrap up the year in a collaborative way. All children are expected to be part of this event, which is scheduled for the early evening to allow families to attend.

Planning for 2019

As our school is arranged into collaborative teaching teams the process of organising children into studio groups is quite different to the task of drawing up traditional class lists. A lot of professional thought goes into placing children into studio groups with teachers we think they will form a strong connection with. However, we don't always get this right. If you feel you need to share any information with us regarding your child's needs and the type of teacher you would like to see them placed with please let us know by emailing admin@rawhiti.school.nz **no later than Friday 2nd November**. Your opinions will be considered alongside of the information from teachers and input from the children themselves. If you know that your plans for 2019 do not involve Rāwhiti School please take the time to let us know now.

Sunhats

Our Sun Smart policy requires all children to wear a Rāwhiti School sunhat in Terms 1 and 4. We are giving the children plenty of reminders this week, and were really impressed with the number of children who turned up on Monday with hat in hand. From the beginning of next week all children not wearing Rāwhiti hats will be required to sit under the covered area in front of the learning studios during break times. Our shade sails have gone back up this week to provide further protection for children playing in the grounds.

Ngā mihi nui ki a koutou katoa,

Liz Weir

School Notices – Ngā pānui a te kura

Community Consultation

Thank you to all those that returned their forms last term. As promised, our Board of Trustees were offering some incentives and prizes, and the winners were:



Studio prize: Papatuanuku with 99% of their forms returned

Individual prizes: (4 randomly drawn from forms returned each receiving a \$50 Palms voucher)

- Jacob Kay
- Jessica Payne
- Jasmine Anderson
- Caily Walker

Family prize: (1 randomly drawn from families where all forms were returned receiving a \$100 Palms voucher)

- Caffell family (Mikaela & Kyralee)

Y8 School Accounts

If your child is in Year 8 and moving on to secondary school next year, we ask that you clear their accounts before they leave.

We thank you for supporting your child's activities.

Year 7 & 8 Camp

The Year 7/8 camp will be at Spencer Park from 21-23 November (week 6) and the cost will be \$45 per student. During their time on camp they will take part in a variety of activities including surfing, forest activities, orienteering, mountain biking, swimming and going to Adrenalin Forest. Adrenalin Forest will be optional as the cost is \$23 per student.

Forms should have come home by now and payment for camp needs to be made by 14 November.

Butterfly Garden

We have finished our butterfly garden and thought you might like to take a look. We have decorated it, built a butterfly house for the butterflies to put their chrysalis, a muddy puddle for them to drink, we have also planted flowers they like and swan plants but they are still to grow!

Thank you for letting us build it at kura we hope the



School Photos

School photos have been sent home with your child today (except sports photos which can be viewed at the office).

If you wish to order, please complete the order forms and return them to the office with payment no later than **Friday 9th November**, or you can order and pay online.

Y7/8 Adrenalin Forest (part of camp)

Adrenalin Forest has been added to all Year 7 & 8's accounts. If your child chooses not to take part your account will be credited accordingly.

Payment for Adrenalin Forest must be received in full for your child to participate.

Touch payments due

If your child is playing touch, their payment of \$40 is due now please.

PTA Update on School Fair

We have created a little booklet with information for families as we have had so many questions coming through. Here is information that will hopefully be helpful to you all.

WHEN: Friday 30th November, 4pm –8pm

WHAT WILL BE AT THE FAIR:

- Food Court (World-famous PTA cooking)
- Entertainment (music and dance)
- Craft stalls (made by the students)
- Cake stall and seedling sales
- Activities and sports (ponies, bouncy castles, dunk tank, fire engine, car rides and more—nothing more than \$2!)
- Second-hand books, clothing and toys
- Chocolate wheel, raffles and more.



HOW YOU CAN HELP

1. Volunteer your time

We'd like to keep the fair as affordable as possible so we're pretty much doing everything ourselves. To achieve this we do need quite a bit of help. We've set up an online roster system where you can go online and see all the jobs we'd like help with, the times needed and info on what you would be asked to do. You can set up your own schedule and it will be emailed to you for your reference later. If things change, you can log back on and change your own roster.

To join up just visit timecounts.org.rawhitipta and click **Join Us** to create an account. Watch a video here for more info: <https://youtu.be/MrF4gkvpJWQ>

Once you're fully logged in you can go to **Opportunities** and click on the **Twilight Fair** area to **Volunteer** for jobs. It works on your mobile too.

If you would like to help out but are not sure what you want to do or can't get online you can simply email pta@rawhiti.school.nz or text Steph on 021-136-5391.

2. Donate something

Here is a list of things we are looking for (and please take note of the dates as we cannot accept some items early):

- Seeds (any you don't need—bring these in soon please)
- Second-hand plant pots or seedling trays
- Seedlings for plants or veges (either self-sown or foraged)

DROP OFF TO ROOM 4 (TANE MAHUTA) IN THE FIRST 2 WEEKS OF TERM 4

- Clean ice-cream containers

DROP OFF TO OFFICE ANY TIME THIS TERM

continued on next page ...

PTA UPDATE ON FAIR continued ...

Other items to donate:

- Second-hand books (good condition)
- Second-hand clothing (good condition and clean)
- Second-hand toys (good condition and clean)
- Wrapped bottle of something for 'Mystery Bottle' (unused, no alcohol, not expired)

DROP OFF TO SCHOOL HALL DURING WEEK BEFORE FAIR (26-30 November)

- Cookies, slices or lollies (bring in ice-cream containers) - we will vacuum seal these for you on cake boards

DROP OFF TO HALL KITCHEN WEEK OF FAIR (26-30 November)

- Cakes and cupcakes

DROP OFF TO HALL KITCHEN THE DAY BEFORE FAIR (29 November)

3. Lend Something

We are going to need to borrow some of these:

- Gazebos, marquees or sun shelters
- Slow cookers
- Long outdoor extension power cords
- Ropes and stakes to make temporary fencing

**STUFF TO WIN!**

Look out for some exciting raffles and auctions leading up to and during the Twilight Fair including ...

1. \$10 raffle for an \$1800 Haier fridge plus supermarket vouchers for \$200!!!
2. Trade Me auctions for big-ticket items
3. \$1 Christmas raffle to win 20+ food hampers
4. Chocolate Wheel with chocolates and plenty of other goodies!
5. \$20 Mystery Buckets with guaranteed prizes in each.

OTHER STUFF

We're doing everything we can to make the fair as eco-friendly as we can. Please remember to bring along your own reusable bags and if you can please walk, bike or scoot as parking will be limited.

Please encourage people to come along to our school fair as all the money we raise will be going towards brand-new playground equipment including a large climbing frame. Exciting! See you there!

Email pta@rawhiti.school.nz if you can help—thanks!

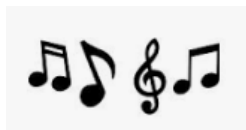
Loose Parts Shed

Our Loose Park Shed is ready to go and will be opening at lunchtimes from next week. We would love some extra bits for the kids to use in their creating, particularly any:

- carpet squares,
- plastic or cardboard tubes
- large cardboard boxes
- cable reels
- old keyboards
- long pieces of fabric.

If you have anything suitable you can drop it off at the office.

Richter Scale for Bell Music



Our school band, Richter Scale, recorded their original song "Popstar Rockstar" during the holidays so listen out for it as it might be our bell music in the upcoming weeks.

NZ ShakeOut 2018

Every 3 years Civil Defence organise a Great Shake Out event to remind people of the right action to take during an earthquake, Drop, Cover and Hold - and to practise a tsunami hīkoi (evacuation) if in a coastal area.

Here are 8 challenges families can do:

1. Show and practice with someone how to drop, cover and hold—inside and outside
2. Check your tsunami zone and plan where to go
3. Store water for 3 days or more
4. Find out which hazards could affect you
5. Work out what to pack in a getaway bag
6. Make a plan that includes who will pick you up if your parents or caregivers can't get to school
7. Make a list of who can help you and who might need your help
8. Fix and fasten at least one thing that could shake in a quake.

Go to www.shakeout.govt.nz for more details.

Tangaroa trip to Arts Centre and Rutherfords Den

This week the students from Tangaroa had a very interesting visit to the Arts Centre.



Community Notices – Ngā pānui a te hapori

(Notices placed here are contingent on space and do not reflect the views or opinions of the school.)

Softball Richmond Keas

<https://www.sporty.co.nz/richmondkeas>

Family Fun Skeleton Hunt

Sunday 28 October, 12pm-2pm, Cathedral Square

Ages 4-14, \$2 pp

Poster in school office

<https://www.facebook.com/events/2098752737105329/>

Taekwon-Do—Ages 5-8 years

Taekwon-Do classes for 5-8 year old students available. Call/text Angela Oliver on 021842011 or email info@pulsetkd.co.nz too book your free trial as spaces are limited.

Tennis—Ages 5-7 years

Our Kiwi Tennis coaching programme is starting Wednesday 24th October and runs for 6 weeks finishing on the 28th November between 3.30-4.30pm each Wednesday. This programme is for beginners in the 5-7 year age group which is designed to teach basic skills and generate enthusiasm for tennis.

For more details and information please contact: Varinia 021-0312199 or Michelle 027-3039973 or email us at nbtc@hotmail.co.nz.

North Canterbury Dog Training Club

There will a training course over 6 consecutive nights (cost of \$40 per child) starting Monday 29th October from 6pm to 7pm with their own dog.

www.ncdtc.co.nz

