



Newsletter #7 - Te Pānui o te kura o Rāwhiti: 6 May 2022

*E ara ake ana i te ūruhi
Rising Above The Ordinary*

From The Principal - Te Pū kāea a te Tumuaki

Kia ora koutou

Welcome to Term 2. With the great weather for the first two days of the term we have had a very positive start. It has been great to catch up with many of you before and after school.

We welcome a number of new whānau to our school, along with Libbee Jackson who is starting her teaching career in Rongo-mā-tāne. I know the Rāwhiti School community will make you all feel welcome.

It is going to be an action packed term as we get more of our normal programmes up and running under the Orange level of the COVID protection framework. Orange means that we are able to go ahead with some of the things that we really missed in Term 1 - such as choir, singing lessons, school sports, and assemblies. It is still not 'open house' here at school while there is still community spread of Covid, and our Orange level operating procedures poster can be found further on in this newsletter.

We continue with our learning concept of Communication and take a change of direction over these next two terms to focus on the Social Sciences curriculum and the new Aotearoa New Zealand's Histories curriculum. This term we seek to explore how stories of tangata whenua are told and preserved through artworks, and how these stories are placed within the local area of New Brighton. Te tioro a karoro—Just like the loud squawks of the seagulls, the stories of tangata whenua should be shared, reflected and heard in our community!

continues on next page ...



Mark Your Calendar

MAY

- 13th Y5-8 Kiwi Competition Entries Close
- 20th Scholastic Book Club Closes
- 24th Y7/8 PCT
- 26th Board of Trustees Meeting
- 31st Zones Cross Country

30 May—2 June

Learning Conversations

JUNE

- 3rd SCHOOL CLOSED – Teacher Only Day
- 6th SCHOOL CLOSED—Queen's Birthday Holiday
- 22nd Canterbury Cross Country
- 24th SCHOOL CLOSED—Matariki Public Holiday
- 30th Board of Trustees Meeting

JULY

- 5th Zones Y7/8 Basketball Tournament
- 8th Last Day of Term 2



From The Principal continued ...

All of our learners will be heading out and about to visit pieces of art in our local community - at He Puna Taimoana, at Taiora/QE2, at the New Brighton Library, and at the beachside playground - amongst other locations. They will also learn more about a significant piece of art located on our own school grounds - our beautiful waharoa. All our teams will be looking for parents to support on these visits so this is a great opportunity to get involved with the classroom programme. Remember, there is no longer a vaccine mandate in place and so all parents are once again able to assist on school trips.

At the end of May we will be offering Learning Conversation appointments over 4 days, and this will be a great opportunity for you to connect with your child's teachers kanohi ki te kanohi (face to face) to talk about learning and achievement. Bookings for these will open soon.

Something to make sure you have in your diary is our final Teacher Only Day for the year, which is scheduled for Friday, June 3rd.

Ngā mihi nui ki a koutou katoa,
Liz Weir, Principal

Principals Awards
Ngā tāonga a te Tumuaki
Rongo-mā-tāne

Izzy, Kingston x3, Rico, Zane

Papatūānuku

Ava, Layla, Maddie H

**Can We Run The Length of New Zealand?**

In the lead up to our cross country on 20th May, we have challenged our whole school to see if they can run the distance of New Zealand and back during class time in just ONE week from Monday 16th May to Friday 20th of May.

Our Healthy active learning day on Friday 20th May will consist of cross country races for our Y4-8 students from 11:15am - 12:15pm and races for our Y0-3 students from 1pm. At 1.30pm, the whole school will have the opportunity to participate in a range of activities such as jump rope, tug of war, gymnastics and many more. Parents and whanāu are welcome to come down to the school to watch their children compete.

Kiwi Competitions For Year 5-8 Students

The University of Canterbury is delighted to offer the annual Kiwi English, Mathematics and Science competitions for Primary and Intermediate schools to students in Year 5-8. The skills based Kiwi competitions are written by New Zealand teachers for New Zealand students and closely align with the New Zealand Curriculum. The online competitions will be run in the last 3 weeks of Term 2 and the first week of Term 3.

The cost for a student to participate is \$9.50 per competition entered. If your child is interested they can collect a form from their studio teachers. **Entries need to be received by Friday 13th May.**





HELL Pizza Reading Challenge

Rāwhiti School will be participating in the HELL Reading Challenge. The HELL Reading Challenge will run in conjunction with the 2022 New Zealand Book Awards for Children and Young Adults. This week students were given their pizza wheels to take home.

How the Reading Challenge works:

Children are being given “pizza wheels”. Every time they finish a book, a slice of the wheel gets signed off by a teacher or librarian. When they have finished seven books, they can get the ‘official’ Rāwhiti School stamp. They can take their completed pizza wheel to any HELL Pizza outlet and redeem it for a free 333 kids’ pizza.

Here are the rules:

- Each pizza wheel is good for one 333 kids' pizza from any HELL Pizza outlet nationwide
- The wheel must be signed by a teacher/librarian, and stamped with the official school stamp
- One pizza per visit per child
- Wheels are non-transferable for money
- Children must redeem their free pizza in person, and before Tuesday 31 January 2023.

Length of NZ: 1600km

CAN RĀWHITI SCHOOL RUN THE LENGTH OF NZ AND BACK IN A WEEK?

Are you up for the challenge?

**FROM MONDAY 16TH MAY
TO FRIDAY 20TH MAY**

How many times can you run the 1km or 500m loop?

HEALTHY ACTIVE
FUN DAY FRIDAY
20TH MAY
AND COMPETITIVE
CROSS COUNTRY
RACES

SINGING LESSONS

RAWHITI SCHOOL

WITH TUI AWARD WINNING
SINGER - SONGWRITER
JENNY PAYNE

\$10 GROUP LESSONS
\$20 INDIVIDUAL

TXT: 022-034-5967
SINGINGWITHJENNYP@GMAIL.COM

 A woman with blonde hair, wearing a dark blue dress with a floral pattern, holding a large red umbrella. She is smiling and looking towards the camera.

Rāwhiti School at **ORANGE** Level

www.rawhiti.school.nz

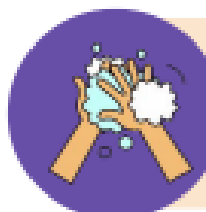


The following protocols will be in place at Rāwhiti School to keep everyone safe.



It is strongly encouraged that staff and students from Year 4-8 wear masks **inside**. Masks must be worn by students 12+ years on school transport.

Where possible children are to be dropped at the gate and collected from there at the end of the day. Parents can pick up and drop off **outside studios**.



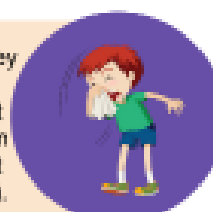
Handwashing/sanitising, elbow coughing/ sneezing and safe eating practices will be explicitly taught and monitored.

Whānau are **not to enter** Learning Studios without an appointment. All visitors to the school must wear a mask indoors and sign in at the office.



Enhanced school cleaning will occur. Sanitising of classrooms and high touch areas will take place daily.

If students are unwell, they must remain at home. If students are unwell at school, they will be taken to the sickbay then sent home (with any siblings).



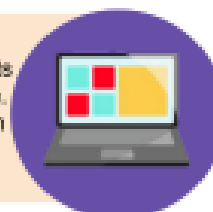
Assemblies and large group activities can take place indoors with spacing and ventilation.

All studios have CO2 sensors and fresh air system installed. Doors and windows will be open when practical.



Sports teams can take part in organised tournaments. Physical activities can take place indoors with spacing and ventilation.

Distance learning is available for those students who are isolating at home. This is accessible through each studio website.



Schools remain **OPEN** at all traffic light levels.

Individual schools may be asked to close in the event of a Covid19 outbreak, or if it can not be staffed.

Please contact the office if your child has been advised to stay home.

03 3889519

Off-site learning is accessible from each studio site.
<https://www.rawhiti.school.nz/our-learning/blogs/>

Community Notices – Ngā pānui a te hāpori

(Notices placed here are contingent on space and do not reflect the views or opinions of the school.)



TIMA
BASKETBALL THURSDAYS

Every Thursday during term time

5pm-6pm

Avon Hub Gym
77 North Parade,
Richmond

\$80 total per term

Please contact
Kaye Nordstrom (Director)
timakiwi@gmail.com
0272267499

TIMA
Today I Am More Active,
Tomorrow I Am More Awesome,
Together It Is More Achievable



TIMA
Under 12 Adapted Sport and Recreation

Every Tuesday during term time
4pm-5pm

\$80 total per term

Please contact
Kaye Nordstrom (Director)
timakiwi@gmail.com
0272267499

 Avon Hub Gym
77 North Parade, Richmond

DRAMA CLASSES – The Canvas Bag Drama School South Brighton is now taking enrolments for term 2, 2022. Ask about a free trial class. Spaces available in the 5 to 8 year old group, 9 to 10 year old group.

Drama gives children a chance to develop imagination and confidence in a playful social environment.

Experience leadership, comedy, improvisation, costumes, laughter, friends, and wrap it all up with a fabulous performance in term four.

All of our tutors are qualified teachers.

Classes run on Thursdays: 5 to 8 year olds 3.30

9 to 10 year olds 4.30

For more information: please email info@canvasbag.nz or Contact Gina Fowler 022 351 2519 or visit our website www.canvasbag.nz



Community Notices – Ngā pānui a te hāpori

(Notices placed here are contingent on space and do not reflect the views or opinions of the school.)



Youthalive trust

Serving New Brighton Since 1989

TAMATĀNE BOYS CLUB



Weekly club for boys run by a team of male leaders with a variety of wild and wacky activities, challenges, sports, games and trips out.

School Years 1-6
Thursdays 4:00pm - 5:30pm
\$40 per term

KITCHEN KLUB



This club is all about food! It teaches the basics of cooking and baking, how to make a variety of sweet and savoury delights for your whānau!

School Years 5-9
Mondays 3:30pm - 5:00pm
\$60 per term - ingredients included

KŌTIROTIRO GIRLS CLUB



Weekly club especially for primary girls, run by a team of leaders with a variety of wild and wacky activities, challenges, sports, games and trips out.

School Years 1-6
Wednesdays 4:00pm - 5:30pm
\$40 per term

CRAFT CLUB



Let's get mixing, matching, experimenting and creating with all sorts of materials! Guaranteed fun and laughs with creative leaders!

School Years 5-9
Thursdays 4:00pm - 5:30pm
\$50 per term - materials included

ROCK SOLID



The biggest, craziest club for intermediates in the east! Creative challenges, games, team socials and trips out!

School Years 7-8
Fridays 4:30pm - 6:30pm
\$40 per term

SENIOR OSCAR



OSCAR is about having fun, chilling with others your own age, while doing activities like cooking, sports and crafts. Van pick ups from all local schools.

School Years 5-9
Weekdays 3:00pm - 6:00pm
\$18 per day (WINZ subsidies available)

SURGE



Friday night social for teens! Join us for some wild activities, trips out, team challenges, camps and chilling with friends!

School Years 9-13
Fridays 7:00pm - 9:00pm
\$30 per term + outing costs

BEACH TOTS



Two weekly parent led playgroups. Tuesdays has a music focus and Thursdays a craft and play focus. No booking necessary.

Parents & Pre-schoolers
Tuesdays & Thursdays 9:30am - 11:30am
\$2 koha - all welcome!

BASKETBALL CLUB



Learn new skills, drills and tricks at our weekly coaching session for children. All abilities welcome!

School Years 3-7
Mondays 3:30pm - 4:30pm, 4:45pm-5:45pm
\$40 per term

AMPLIFY SCHOOL OF MUSIC



Learn an instrument through a trained tutor. Current options: Guitar, Drums, Bass, Piano, Vocals and Rock Bands.

School Years 1-13
www.amplify.mymusicstaff.com
In-school and After school by arrangement

HOLIDAY PROGRAMMES



KEA - SCHOOL YEARS 1-3
PUKEKO - SCHOOL YEARS 4-6
PIWAKAWAKA - SCHOOL YEARS 7-9

BREAKAWAY INTERMEDIATES & TEENS

BABYSITTING TRAINING FOR TEENS

CONTACT

ENROL IN CLUBS: <https://yoclubs.aimyplus.com>

QUERY ABOUT CLUBS: rego@yat.org.nz

ENQUIRE ABOUT AMPLIFY: amplify@yat.org.nz

BROCHURES & MORE INFO: www.yat.org.nz

Community Notices – Ngā pānui a te hapori

(Notices placed here are contingent on space and do not reflect the views or opinions of the school.)



Girls thrive here

ENROLMENT APPLICATIONS FOR 2023 CLOSE 1 JUNE 2022



SCHOLARSHIP OPPORTUNITIES

- ACADEMIC
- ALL ROUNDER
- BOARDING
- MUSIC
- PERFORMING ARTS
- SPORT

SCHOLARSHIPS AVAILABLE FOR 2023
APPLICATIONS CLOSE 4PM, 13 MAY



**free event
for parents**

May 23rd (Mon)
7:00PM - online via Zoom

A free event for parents and whānau about keeping young people safe online. Presented by Netsafe's Education Advisor Paula Wistrand. The session will look at how parents/whānau can support and enable children and young people to navigate online opportunities, challenges and complexities.

Scan to sign up and receive Zoom link:



Supported by Mana Ake and Youth Alive Trust. Funded by Fresh Choice, Parklands





**NEW ZEALAND
MALE CHOIR**

The Boys are coming to the Pier
Experience the magic of male voices



The New Zealand Male Choir will present a broad range of music including songs from the shows.

**In concert with South Brighton Voices Community Choir
& 'Molls Dolls' Tap performance Group**

Saturday 28th May 2022, 3.00pm
Rawhiti School, 50 Leaver Terrace, North New Brighton, Christchurch

Adults: \$20, Secondary & Primary Students free
Door sales available. Eft-Pos available

Contact: John Kember Mob: 027 366 6271, Tel: (03) 388 6431, Email: johnhk.kember@gmail.com



www.newzealandmalechoir.co.nz

Community Notices – Ngā pānui a te hapori

(Notices placed here are contingent on space and do not reflect the views or opinions of the school.)

Imagination Station

Our epic LEGO after school classes this term are at Aranui on Thursdays 3.30pm—5pm and at New Brighton Library on a Friday from 3.30pm—5pm.



We are currently offering a 2 for 1 winter school discount to parents and students. If a student brings a friend for the term it will be half price for both students. Our classes can even be attended as a one-off session for those wanting to try it out without committing to a full term.

These classes involve LEGO Technic, remote controlled race cars, beginner robotics with LEGO WeDo2.0, robotics and coding with LEGO SPIKE Prime, LEGO Mindstorms and LEGO movie making with stop-motion animation.

If you're interested, find more information and reserve your space at imagination-station.org.nz or give us a call on 027 438 2106.